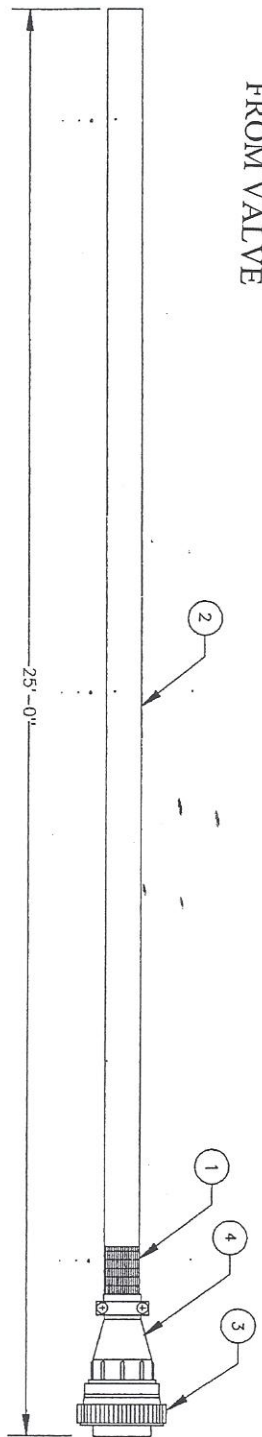


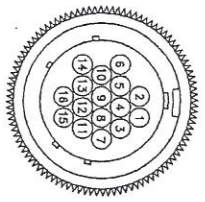
PARTS LIST

№	PART NUMBER	QTY	PART DESCRIPTION
1	231-007	2"	SHRINKTUBING .625
2	252-020	25'	CABLE 15CON 18GA PVC GRY
3	255-017	1	CNTR 16 PIN PLUG
4	255-043	1	CNTR 16 PIN SHELL #17
5	255-234	13	CONT AMP SOCKET 16-18GA

FROM VALVE



PIN OUT DETAIL



- 1 --- RED WIRE
- 2 --- ORG WIRE
- 3 --- WHT WIRE
- 4 --- BLU/BLK WIRE
- 5 --- RED/BLK WIRE
- 6 --- ORG/BLK WIRE
- 7 --- WHT/BLK WIRE
- 8 --- BLU WIRE
- 9 --- BLK/WHT WIRE
- 10 --- GRN WIRE
- 11 --- BLK WIRE
- 12 --- BLU/WHT WIRE
- 13 --- GRN/WHT WIRE
- 14 --- NOT USED
- 15 --- NOT USED
- 16 --- NOT USED

NOTES:

- 1. CUT OFF GRN/BLK & RED/WHT WIRES AT EDGE OF HARNESS.
- 2. NOT SHOWN: (5)

REV	DESCRIPTION	REVISIONS	APPROVED	DATE	BY
1	REVISED DRAWING		HIT	11/14/99	HIT
2	320-030 WBS 320-035		HIT	07-09-03	HIT

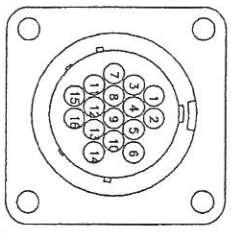
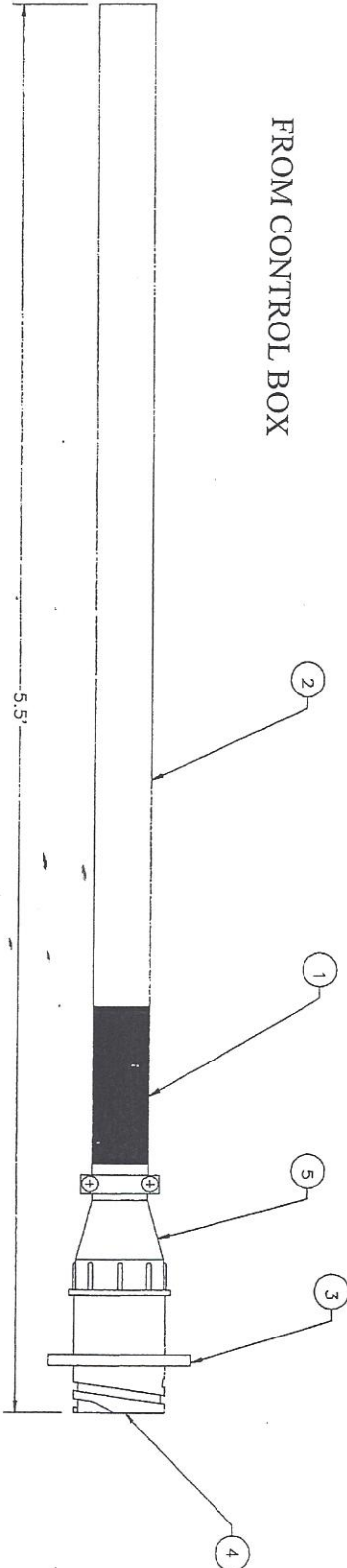
  

UNLESS OTHERWISE SPECIFIED	SIGNATURES	DATE
DESIGNER	HIT	11/14/99
CHECKER	HIT	11/14/99
DATE		11/14/99

THIS DRAWING IS A PROPRIETARY DESIGN OWNED BY FASSE VALVES. ANY REPRODUCTION OR USE WITHOUT THE WRITTEN PERMISSION OF FASSE VALVES IS PROHIBITED. ALL RIGHTS RESERVED.	SIZE: 11x17	SCALE: A	DWG NO: 320-034	SHEET: 1
--	-------------	----------	-----------------	----------

FROM CONTROL BOX



- 1 --- RED WIRE
- 2 --- ORANGE WIRE
- 3 --- WHITE WIRE
- 4 --- BLUE/BLACK WIRE
- 5 --- RED/BLACK WIRE
- 6 --- ORANGE/BLACK WIRE
- 7 --- WHITE/BLACK WIRE
- 8 --- BLUE WIRE
- 9 --- BLACK/WHITE WIRE
- 10 --- GREEN WIRE
- 11 --- BLACK WIRE
- 12 --- BLUE/WHITE WIRE
- 13 --- GREEN/WHITE WIRE
- 14 --- NOT USED
- 15 --- NOT USED
- 16 --- NOT USED

NOTE:  
1. CUT OFF RED/WHIT AND GRN/BLK WIRES AT EDGE OF JACKET

PARTS LIST

№	PART NUMBER	QTY	PART DESCRIPTION
1	231-009	2'	SHRINKTUBING .500" BLK
2	252-020	5.5'	CABLE 15COND 18GA
3	255-013	1	CNTR 16 PIN RECP FLANGE
4	255-023	13	CNTR PIN (GOLD) 16/18GA
5	255-043	1	CNTR 16 PIN SHELL #17

REV	DESCRIPTION	FORM #	DATE	APPROVED	UNLESS OTHERWISE SPECIFIED	SIGNATURES	DATE
A	RELEASED DRAWING	08-0005	07/10/97	JLM/JEN	DESIGNED BY DRAWN BY CHECKED BY ENGINEER	JLM JLM JLM JLM	07/01/97 07/01/97 07/01/97 07/10/97

THIS DRAWING IS A PROPERTY OF FASSE VALVES. IT IS TO BE USED ONLY FOR THE PROJECT AND UNDER A CONFIDENTIAL RELATIONSHIP. EXCEPT FOR REVISIONS, ALL RIGHTS ARE RESERVED BY FASSE VALVES.

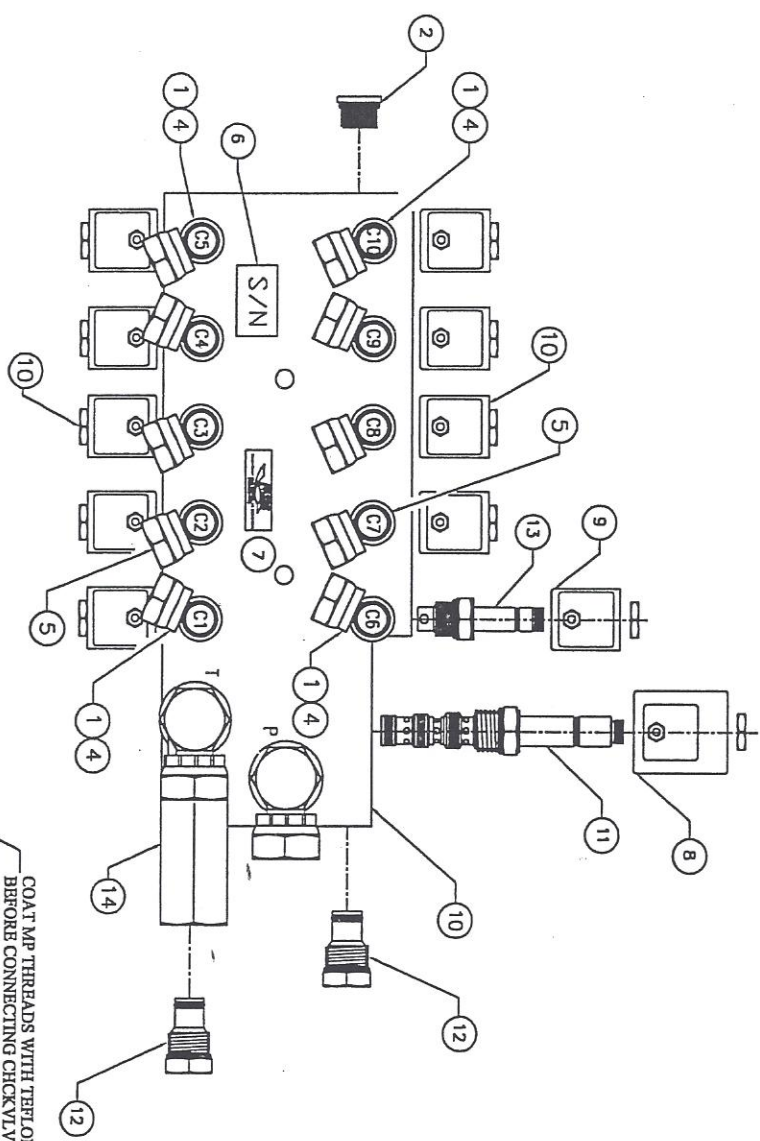
HARNESS 15CON 16PIN(13) F /5.5'

FASSE VALVES  
SEVEN ROWS PARK  
REHOBOTH, NE 80806-2540

SIZE: FSCAL NO  
DWG NO: 311-097

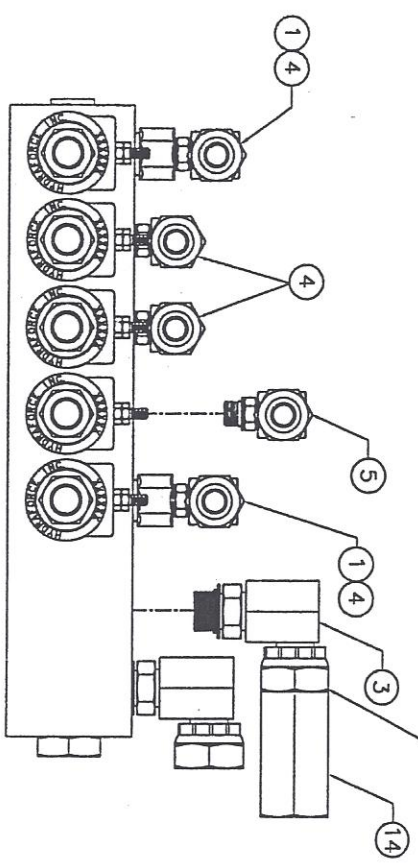
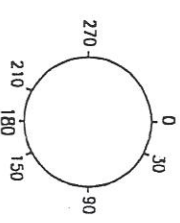
PARTS LIST

NO.	P.T. NO.	QTY	PART DESCRIPTION
1	210-151	4	FTG 6410-6-6/S-MO-FO
2	210-160	1	FTG 6408-HHP-10/HOLL HEX PLUG MO
3	210-166	2	FTG 6901-B-6 /E-MO-FPSW
4	210-189	8	FTG 6901-6-4/E-MO-FPSW
5	210-229	2	FTG 6901-6-6/E-MO-FPSW
6	232-050	2	DECL S/N (SILVER)
7	232-059	1	DECL GOLD/BLK 1.5 X .5
8	253-003	1	COIL 6354012 DD
9	253-005	10	COIL 6304012 DD
10	270-090	1	BLOCK M14153-1
11	273-008	1	CART SV10-40-0-N-00
12	273-012	2	CART CP10-20
13	273-013	10	CART SV08-20-0-N-00
14	279-008	1	CHK W/V 10301-503



COAT MP THREADS WITH TEFLON BEFORE CONNECTING CHECKLV TO FTG.

P, T=90°  
 C10,C8,C5,C2,C3,C7=150°  
 C6,C1,C4,C9=210°



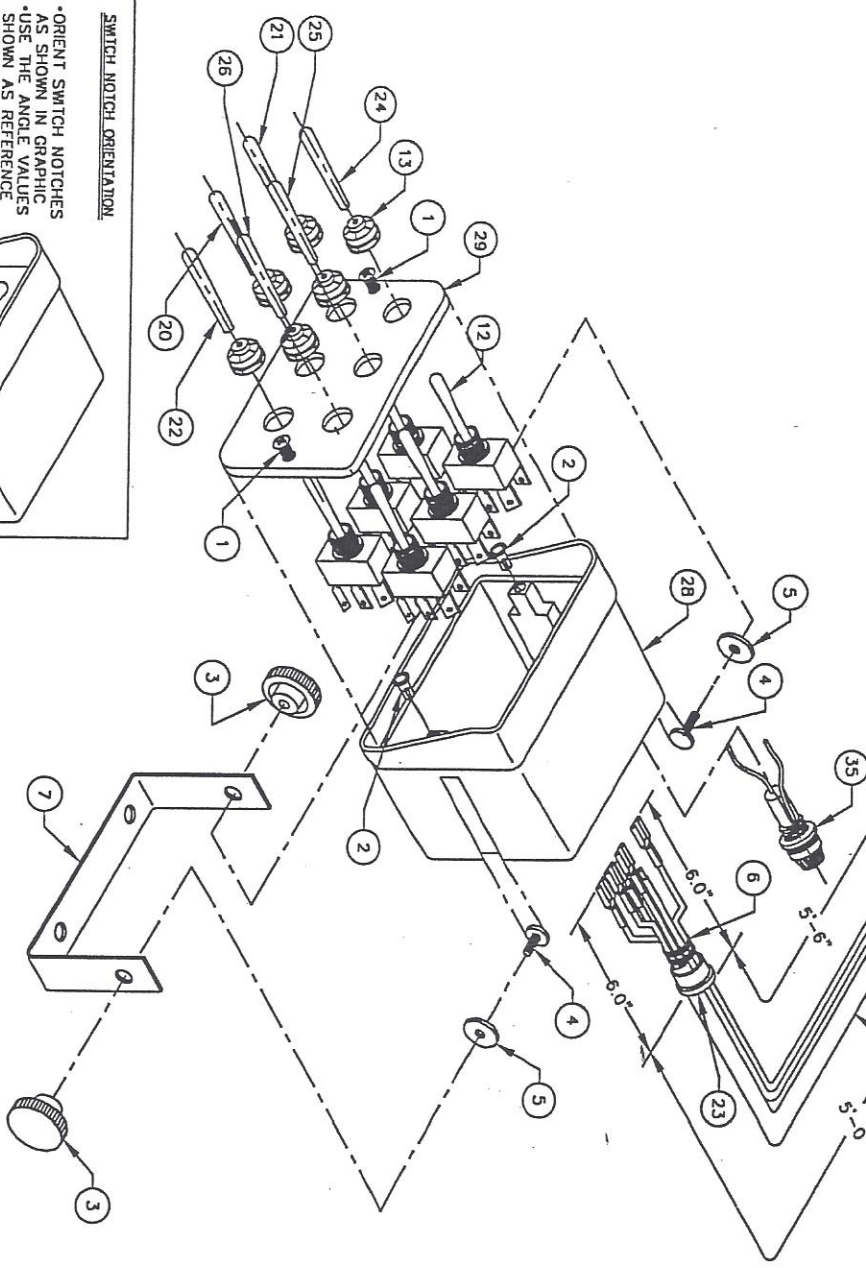
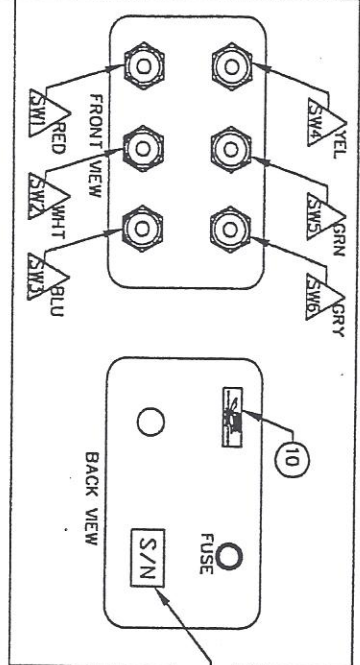
NOTES:

1. TORQUE -06 FITTINGS TO 20 FT. LBS.
2. TORQUE -08 HFCART & FTGS TO 20 FT. LBS.
3. TORQUE -10 HFCART TO 25 FT. LBS.
4. TORQUE COIL NUTS TO 5 FT. LBS.
5. 210-151 FTGS GO IN PORTS C1, C5, C6, AND C10 UNDER THE FTGS 210-189.

REV	DESCRIPTION	FORM #	DATE	APPROVED	REV	DESCRIPTION	FORM #	DATE	APPROVED
F	ADDED (1) 279-008, MODIFIED FTGS	02-0008	07/27/07		A	REVISED DRAWING	00-0002	02/27/03	
E					B	REV 4 210-151 TO PORTS C1, C1, C5, C6	00-0002	04/14/03	
D					C	REV 28-48 AND 28-58, 28-18, 05-28-28 IN 2	00-0002	02/28/03	
C					D	REV 10, 210-189 IN 210-189	00-0002	02/28/03	
B					E	REV 10, 210-189 IN 210-189	00-0002	02/28/03	
A					F	REV 10, 210-189 IN 210-189	00-0002	02/28/03	

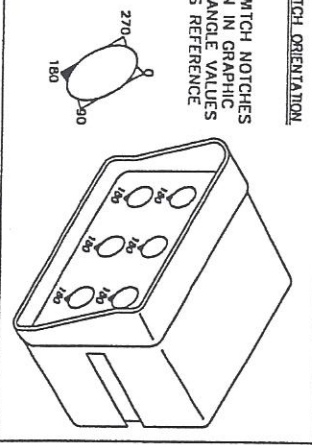
FASSSE VALVES  
 302-229





**SWITCH NOTCH ORIENTATION**

•ORIENT SWITCH NOTCHES AS SHOWN IN GRAPHIC  
 •USE THE ANGLE VALUES SHOWN AS REFERENCE



**PARTS LIST**

N#	PARTNUMBER	QTY	PART DESCRIPTION
1	212-184	2	SCREW 6-32 X 3/8 OVAL HD BLK
2	212-202	2	INSERT 6-32X3/8 BRASS
3	212-215	2	KNOB 1/4-20 FEMALE
4	212-231	2	SCREW WELDED 1/4-20 X .500
5	213-335	2	WASHER NYLON .257X.875X.060
6	214-002	14	CABLE TIE BLACK 7"
7	219-300	1	BRKT HSNQ MONITOR
8	230-057	1	BAG POLY CLR 14 X 18 2MIL W/LOGO
9	232-090	1	DECL S/N (SILVER)
10	232-059	1	DECL GOLD/BLK 1.5 X .5
11	233-010	1	LIT GUIDE NIKKEL IRON 0805
12	250-013	6	SW TOG DPDT 3P MOM LONG
13	250-023	6	SW TOG BOOT OPN GRY
14	254-001	1	DIODE 01B6A2 6AMP
15	255-002	19	TRM T-TAP F PO BLU
16	255-006	13	TRM PO F INS 22/18GA
17	255-030	3	TRM SPLICE CLOSED END
18	255-070	6	TRM PO M/F 16-14GA
19	255-119	4	TRM PO F INS 16-14GA
20	259-004	1	SW TOG GRIP VNYL WHI .187
21	259-005	1	SW TOG GRIP VNYL RED .187
22	259-015	1	SW TOG GRIP VNYL BLU .187
23	259-021	1	GROMMET .66700 SNAP
24	259-022	1	SW TOG GRIP VNYL YEL .187
25	259-023	1	SW TOG GRIP VNYL GRN .187
26	259-027	1	SW TOG GRIP VNYL GRY .187
27	300-271	1	HARNSS R/B WIRE 7/8"
28	304-400	1	ENCL DRL MNTN W/FUSEHOLDER
29	308-559	1	ENCL FP DRL MNTN-6X15X325 DECAL
30	311-097	1	HARNSS 15 CON 16PN(13) F 7.5.5"
31	314-918	2	DIODE ASSY 6A05/2G-1B
32	319-575	1	HARNSS ICON 18GA BLK 7/1"
33	319-608	1	HARNSS ICON 18GA RED 7/1.5"
34	319-623	1	HARNSS ICON 18GA GRN 7/1"
35	319-789	1	FUSEHOLDER PANEL MOUNT ASSY 10A 7/5"

- NOTES:**
1. USE 2 CABLE TIES TO SECURE HARNSS
  2. USE 2 CABLE TIES TO COIL UP HARNSS
  3. PUT REMAINING CABLE TIES IN BAG
  4. NOT SHOWN: (8) (11)
  5. CUT OFF GRN/BLK AND RED/WHI WIRES AT HARNSS.

REV	DESCRIPTION	REVISED	DATE	APPROVED	DATE	DATE
A	INITIAL DESIGN	FORM 1	12/11/98	HIT	HIT	
B	CHG 212-002 PNL 13 TO 14, CHG 212-004 PNL 13 TO 12	01-0023	01/28/01	ZPK	RL	
C	ADD 01 231-010	02-0023	02/27/01			
D	201-000 BLS 201-304	02-0003	07/20/03			

DATE	2/19/02	DATE	2/19/02
DESIGN	ESB	DATE	2/19/02
CHKD	ESB	DATE	2/19/02
APP'D	ESB	DATE	2/19/02

THIS DOCUMENT IS A PROPRIETARY TRADE SECRET OF FASSEE VALVES AND IS TO BE KEPT UNDER LOCK AND KEY. IT IS TO BE CONTROLLED BY THE USER. THIS DOCUMENT IS THE PROPERTY OF FASSEE VALVES.

MNTR ASSY 805/RAN-C15L5PN16F

FASSEE VALVES  
 1000 W. 10TH ST.  
 KENNESAW, W. VA. 26001-2348

REV NO 320-105

DATE 1 OF 2