

"Serving The Growers Equipment Needs Since 1923"

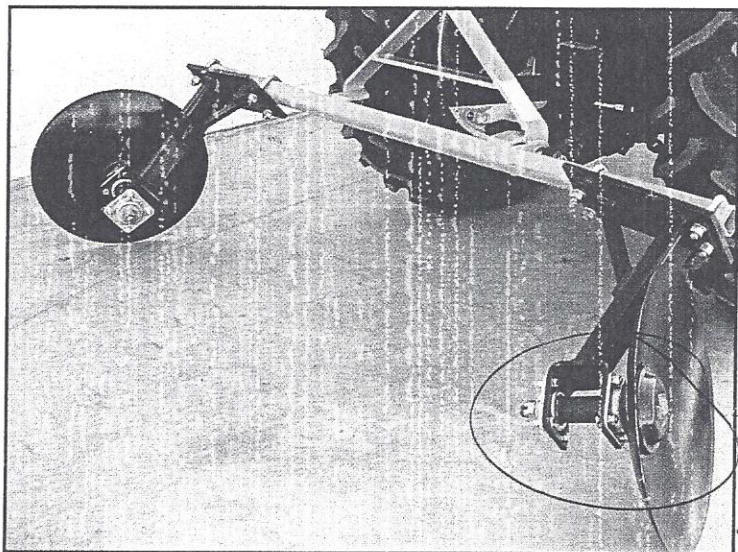


BUFFALO

DISC RIDGER

**MODEL 701
(shown)**

- * EASY TO ADJUST
- * REVERSIBLE GANGS
- * 1-1/8" SQUARE GANG BOLTS
- * CLEAN DESIGN, LOW PROFILE
- * HEAVY RELUBABLE SEALED BEARINGS
- * NEW INGERSOLL DURA - TIGHT (TM) END WASHERS - - FOR POSITIVE HOLDING OF GANG BOLT ASSEMBLY
- * HEAVY DUTY - IDEAL FOR VINEYARD, ORCHARD BACKFILLING TO VINE OR TREE



*See
PARTS
Diagram
for
Setup
&
Assemb.*

BUFFALO Heavy Duty Border Discs are built for durable, long lasting continuous work. All units utilize a special gang bolt tension arrangement with spring steel and loaded end washers to prevent loose blades. All units are adjustable in both tilt and angle or a combination of tilt & angle to perform various requirements of the units. Users are limited only by your needs or imagination. Mounts on any 2-1/4" bar.

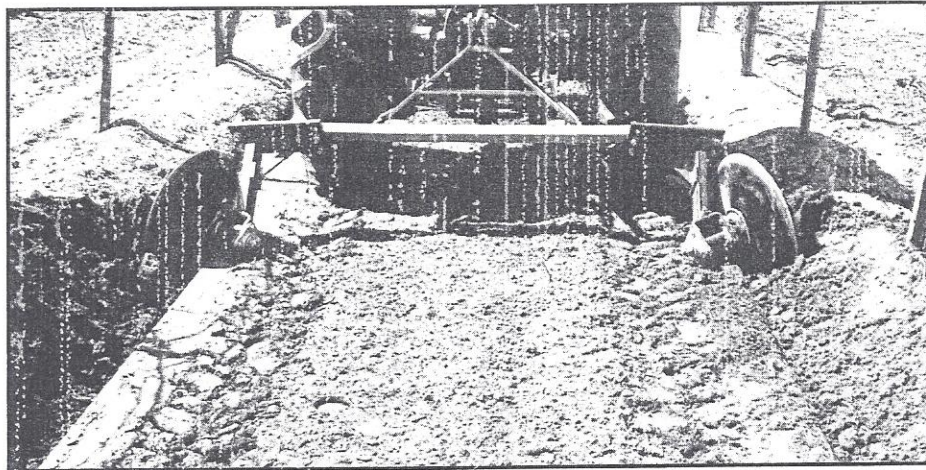
ORDER INFORMATION: SEE BACK OF PAGE
PRICING INFORMATION: SEE END OF SECTION

MANUFACTURED BY:

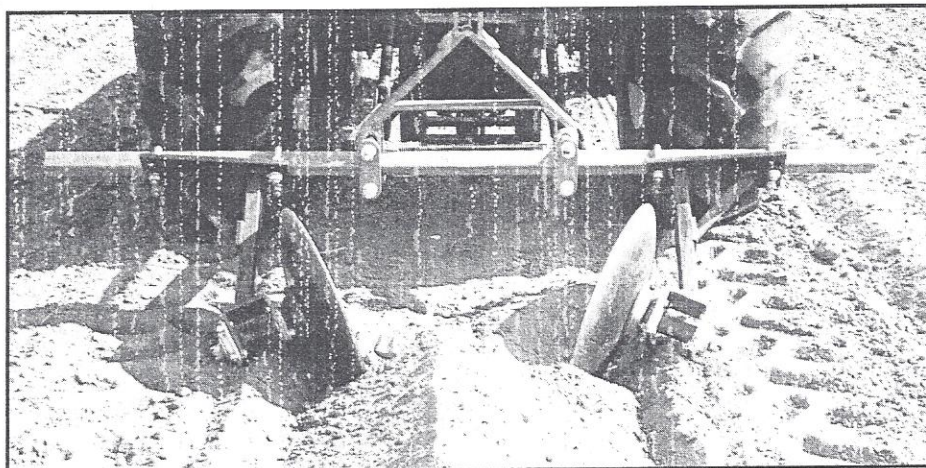
NIKKEL

IRON WORKS, INC.

17045 Central Valley Hwy, Shafter, CA 93263 * Phone 805/746-4904



The 701 at work



MODEL NO.	BLADES	GANG BOLT SIZE
701 - 0	0	1-1/8"
701 - 2	22"	1-1/8"
701 - 4	24"	1-1/8"
447012	701 w/22" blades plus Model 44 lift frame (pair)	
447014	701 w/24" blades plus Model 44 lift frame (pair)	

>>> UNITS ARE INTERCHANGEABLE RIGHT OR LEFT
>>> MAY BE PURCHASED AS ONE SIDE ONLY

PRICING INFORMATION: SEE END OF SECTION

SECTION 7, PAGE 2-----