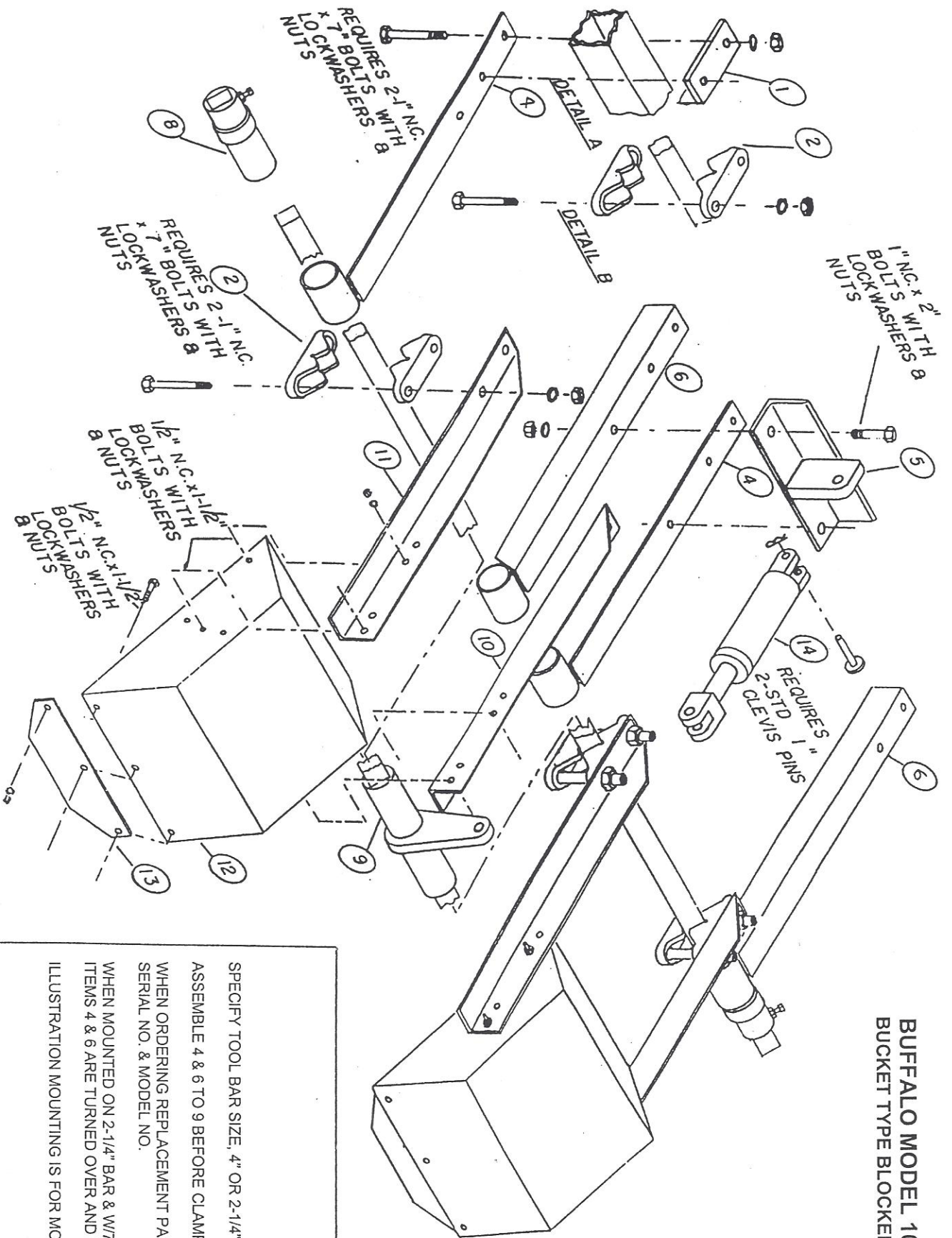
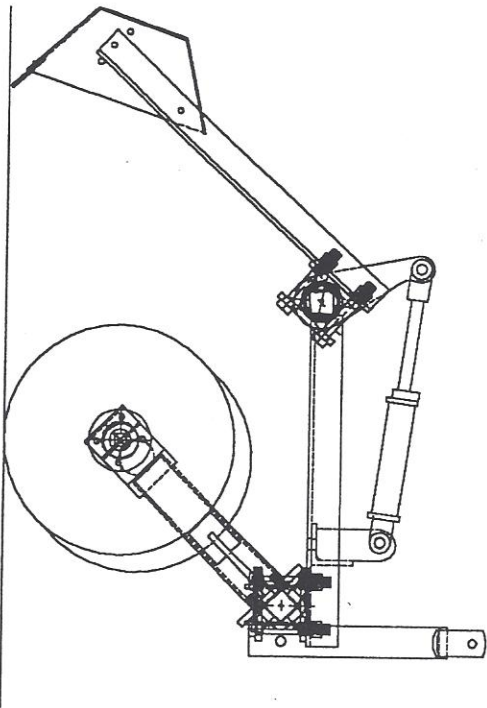


**BUFFALO MODEL 10
BUCKET TYPE BLOCKER**

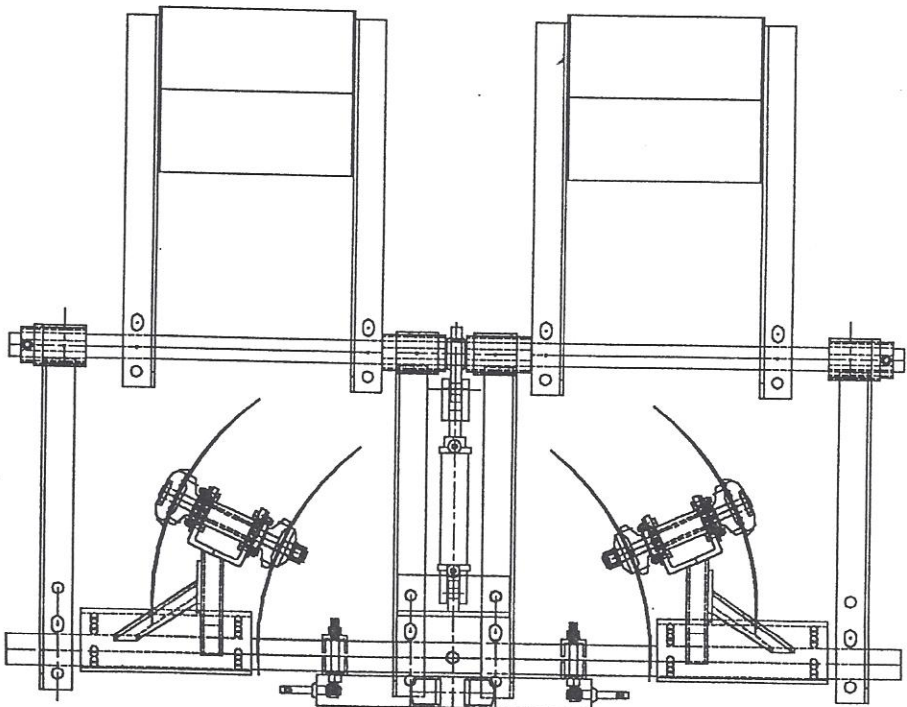


SPECIFY TOOL BAR SIZE, 4" OR 2-1/4"
 ASSEMBLE 4 & 6 TO 9 BEFORE CLAMPING THEM TO TOOL BAR
 WHEN ORDERING REPLACEMENT PARTS, SPECIFY PART NO.,
 SERIAL NO. & MODEL NO.
 WHEN MOUNTED ON 2-1/4" BAR & W/702 BUFFALO RIDGER,
 ITEMS 4 & 6 ARE TURNED OVER AND EXCHANGE SIDES
 ILLUSTRATION MOUNTING IS FOR MODEL 417033 BUFFALO RIDGER

Buffalo Model 10 Blocker Assembly Instructions
Illustrated using Buffalo 702-2 Ridger W/ 402 A Frame & 2 1/4" Bar



Right side View



Top View

Product: Model 10 Blocker, 702-2 Ridger Top & Side View
Drawing No. 10BLK20010
Date 7/28/00
Notes
Changes
Scale 1:2

Nikkel Iron Works, Inc
P.O. Box 1597
Shafter, CA 93263

MANUFACTURED BY:

NIKKEL IRON WORKS

17045 Central Valley Hwy, Shafter Ca 93263

Phone 661/746-4904

MODEL 10 BUCKET TYPE BLOCKER

REF	PART NO	DESCRIPTION	QTY
1	7009	CLAMP PLATE - 4" BAR	4
2	1855	2-1/4" TOOL BAR CAP (for 4"bar use 8)	16
4	1018	LEFT BEARING MOUNT ANGLE ASSY	2
5	1019	HYDRAULIC CYLINDER MOUNTING ANCHOR	1
6	1020	RIGHT BEARING MOUNT ANGLE ASSY	2
8	1022	PIVOT BEARING WELDED ASSY W/SET SCREW	2
9	1023	LIFTING ROLL WELDED UNIT W/CENTER BEARING SURFACE & HYD CYL ANCHOR	1
10	1024	DUMP BUCKET ARM - RIGHT SIDE	2
11	1025	DUMP BUCKET ARM - LEFT SIDE	2
12	1026	DUMP BUCKET WELDED ASSEMBLY	2
13	1028	REPLACEABLE CUTTING EDGE	2
14	N201028	2X8 HYDRAULIC CYLINDER	1

DRAWING DETAIL A - FOR USE WITH 4" BAR

DRAWING DETAIL B - FOR USE WITH 2-1/4" BAR